



Brief from Big Lottery Fund

Over £100 million 5 year investment across 21 areas of England to:

- Enable young people who are furthest from the labour market to secure employment or take up enterprising opportunities

(Focusing on 18 – 24 year olds who have been out of work, education or training for over 12 months)



The *Greater Manchester Talent Match* vision is:

- All young people are valued and supported to realise their potential, gain employment and enjoy fulfilling lives
- Connecting young people, employers and organisations will change the way youth employment is approached in Greater Manchester



Our principles

**Local solutions
DAY ONE**

**Centred on young
people
DAY ONE**

**Positive approach
DAY ONE**

**Building on assets
DAY THREE**

**Learning
DAY THREE**



Delivery Model



The *Greater Manchester Talent Match* Partnership:



**new
economy**

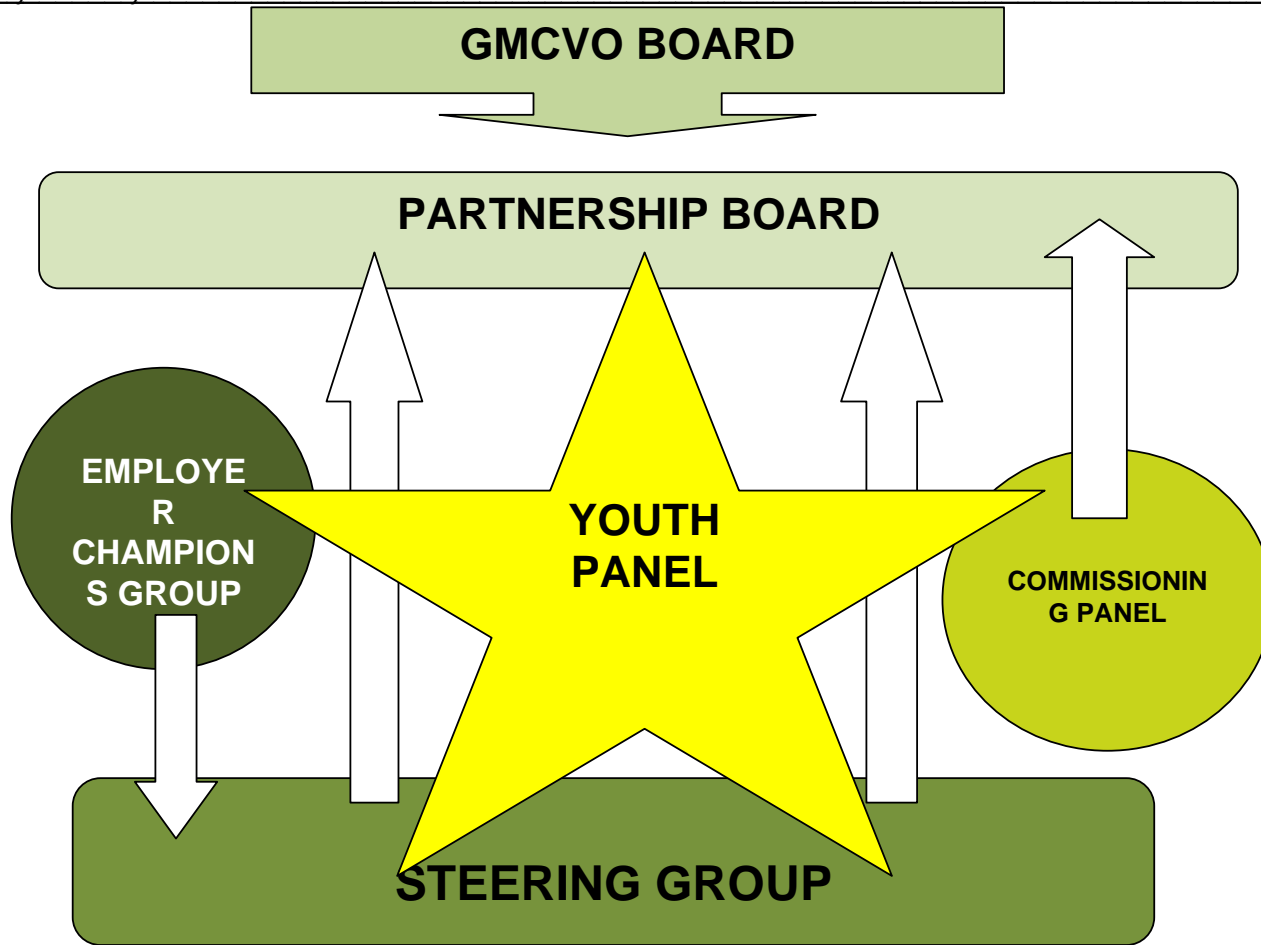


The co-operative

Greater Manchester
Skills and
Employment
Partnership

ADDLESHAW GODDARD





Outcome One – Young people engage

- a) Young people engage for 6 months AND make progress towards employment
- b) Young people participate in work-related opportunities

Outcome Three - sustainable pathways

- a) Employers engaging
- b) Connecting voluntary youth organisations with employers (bespoke support)
- c) Opportunities Hub – informing Talent Coaches and filling gaps

Outcome Two – Young people get jobs

- a) Entry into employment/self-employment
- b) Sustain employment/self-employment

Outcome Four – Influence GM policy

Our approach built into Greater Manchester Employment and Skills Strategy



***Greater Manchester Talent Match* profile**

At start of support:

- **18 – 24 years of age**
- **Out of employment, education and training for twelve months or more**
- **Not mandated to the Work Programme or any other statutory programme**
- **Legally able to obtain work in the UK**
- **Permanently or temporarily resident in one of the ten Greater Manchester local authorities**



Be from one or more of the following target groups

- **Carer**
- **Care leaver**
- **Ex-offender**
- **Lone parent**
- **Young person with alcohol or substance misuse issues**
- **Young person with health-related issues (incl. mental health issues)**
- **AND/OR Young person with other significant barriers to employment**



Targets for Outcomes 1 and 2

- 1,600 young people engaged with *Greater Manchester Talent Match* for 6 months or more and make positive progress towards employability
- 1,200 (75% of beneficiaries) participate in work-related opportunities
- 560 young people enter employment or self-employment
- 400 of these remain in employment (6 months) or self-employment (12 months)





**Shaping journeys towards
employment for young people**



Greater Manchester Talent Match

Commissioned Organisations July 2014/March 2015

Pilot Round:	Bolton	Bury	Manchester	Oldham	Rochdale	Salford	Stockport	Tameside	Trafford	Wigan	Multiple barriers	mental ill-health	alcohol/substance misuse	lone parents	care leavers	carers	ex-offenders	Physical ill-health
Organisation																		
Bolton Lads and Girls Club	✓										✓	✓	✓	✓	✓	✓	✓	✓
Bolton YMCA	✓										✓	✓	✓		✓		✓	
Breakthrough UK Limited			✓								✓							
Education Training Partnership	✓	✓			✓					✓	✓	✓		✓	✓	✓	✓	✓
Groundwork	✓	✓		✓	✓						✓	✓	✓	✓	✓	✓	✓	✓
Pure Innovations Limited	✓	✓	✓	✓	✓	✓	✓	✓	✓	✓					✓			
Raise the Youth Foundation CIC	✓			✓		✓					✓	✓	✓	✓	✓	✓	✓	✓
Street League			✓	✓							✓							
The Manchester College			✓								✓	✓	✓	✓	✓	✓	✓	✓
Trafford Housing Trust									✓									
United Response Supported Employment		✓	✓	✓		✓	✓		✓		✓	✓						✓
Wai Yin	✓	✓	✓	✓	✓	✓	✓	✓	✓	✓	✓			✓				

Second Round:	Bolton	Bury	Manchester	Oldham	Rochdale	Salford	Stockport	Tameside	Trafford	Wigan	Multiple barriers	mental ill-health	misuse lone parents	care leavers	carers	ex-offenders	obstacles	Other Significant
Organisation																		

4CT Limited			✓															✓	✓
Antz Junction			✓								✓	✓	✓	✓	✓	✓	✓	✓	✓
Back on Track	✓	✓	✓	✓	✓	✓	✓	✓	✓	✓			✓			✓	✓		
Child Action Northwest						✓					✓		✓			✓		✓	✓
Contour Homes	✓										✓		✓	✓				✓	
G-Force									✓		✓	✓	✓	✓	✓	✓	✓	✓	✓
Gingerbread (North West)	✓	✓	✓	✓	✓	✓	✓	✓	✓	✓			✓						
Grace Incorporation Faith Trust (GIFT)									✓				✓			✓			✓
Greater Merseyside Connexions Partnership (GMCP)						✓					✓	✓	✓	✓	✓	✓	✓	✓	✓
GreaterSport			✓		✓	✓				✓			✓			✓			✓
Groundwork MSSTT			✓			✓	✓	✓	✓		✓		✓	✓		✓			
Involved						✓					✓	✓	✓	✓	✓	✓	✓	✓	✓

Manchester Young Lives			✓									✓	✓	✓	✓	✓	✓	✓	✓	✓
Mancunian Way			✓											✓				✓		
Positive Steps Oldham				✓								✓	✓	✓	✓	✓	✓	✓	✓	✓
Reform Radio CIC		✓												✓						✓
Salford Foundation Ltd						✓											✓			
Stockport Homes Limited							✓					✓	✓	✓	✓	✓	✓	✓	✓	✓
The Broughton Trust						✓														✓
The Factory Youth Zone			✓									✓	✓	✓	✓	✓	✓	✓	✓	✓
Trafford Connexions									✓			✓	✓	✓	✓	✓	✓	✓	✓	✓
Upturn Enterprise Limited			✓	✓		✓								✓			✓	✓	✓	✓